

PLANS IN METRIC & IMPERIAL

19 mm
= 1/2"



P.O. BOX 30062, TAKAPUNA NORTH,
AUCKLAND, 9. NEW ZEALAND.

TELEPHONE: 498-992

THE PELIN "CARIBOU" 15' TRAILER YACHT

PLY OR FOAM SANDWICH GLASS CONSTRUCTION

L.O.A. 15ft.
 BEAM: 6'11"
 DRAUGHT centreboard up 10 1/2" — centreboard down 3' 10"
 FREEBOARD FORWARD 2' 2" — FREEBOARD AFT 1' 9"
 HEIGHT OF MAST 19' 3"
 SAIL DIMENSIONS: Mainsail luff 17'11"; foot 7'9"
 leech 19'3"; Headsail luff 14'0",
 foot 7'6"; leech 13'6".

HEADROOM: 3'7"
 DISPLACEMENT: 700lbs
 COST OF MATERIALS (plywood) hull, deck and cabin \$400. Complete mast, sails etc. \$900. Foam sandwich version \$700. hull, deck and cabin.

MATERIALS: Timber 180 super ft.

Plywood: 8 x 4 x 3/16" 11 sheets
 8 x 4 x 1/4" 3 sheets
 8 x 4 x 5/16" 5 sheets
 8 x 4 x 3/8" 1 sheet
 8 x 4 x 1/2" 1 sheet

PLAN includes FULLSIZE FRAME PATTERNS plus full construction details.

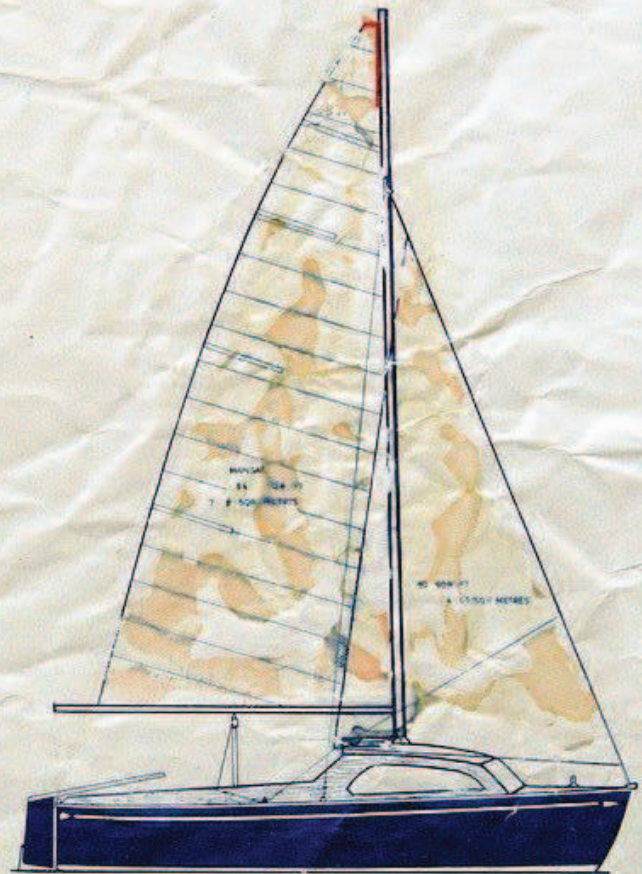
COST OF PLAN \$35.00 NZ
 \$40.00 AUST
 \$45.00 O/SEAS

STUDY PRINT: \$3.00 NZ: \$4.00 AUST: \$6.00 O/SEAS:

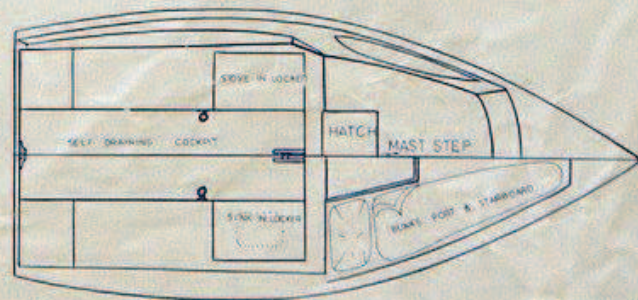
The 15' CARIBOU has been designed as a day sailer and could be used for limited cruising for two people. The round bilge hull carries the maximum beam well aft to take the weight of the crew in the cockpit. The self draining cockpit combined with the wide beam ensures maximum safety and stability and with 150lbs of ballast as well as the steel centreboard, the craft is self righting.

The wooden version of this craft is constructed over frames which can be from Pine or similar cheap material. These are overlaid with the permanent stringers which are temporarily fastened to the frames. The keel and stem are constructed from permanent timber as are the stringers and overlaid with two skins of 3/16" plywood cut into 6" strips on the double diagonal. This eliminates any necessity for joining the plywood on the chines and has proved a quick and simple method of construction. **FOAM SANDWICH.** The fullsize frame patterns used for the timber construction are also used for the foam sandwich construction and the same basic building jig is set up with the same frames as for the plywood hull. The foam is then overlaid on the frame work and fibreglassed. Full details of this are given with the plan.

The interior layout consists of two bunks in the cabin and a sink and stove recessed into the cockpit seats or alternatively two quarter berths. The cockpit is 7'6" in length so that the crew weight can be concentrated towards the centre of the craft. The centreboard is constructed from 1/2" steel plate and galvanised to prevent corrosion and maintenance. The bulk of the case is completely hidden under the cockpit floor and protrudes into the cabin only the bare minimum. **SEND FOR A STUDY PRINT** — \$3.00 NZ: \$4.00 AUST: \$6.00 O/SEAS:



Plan Profile

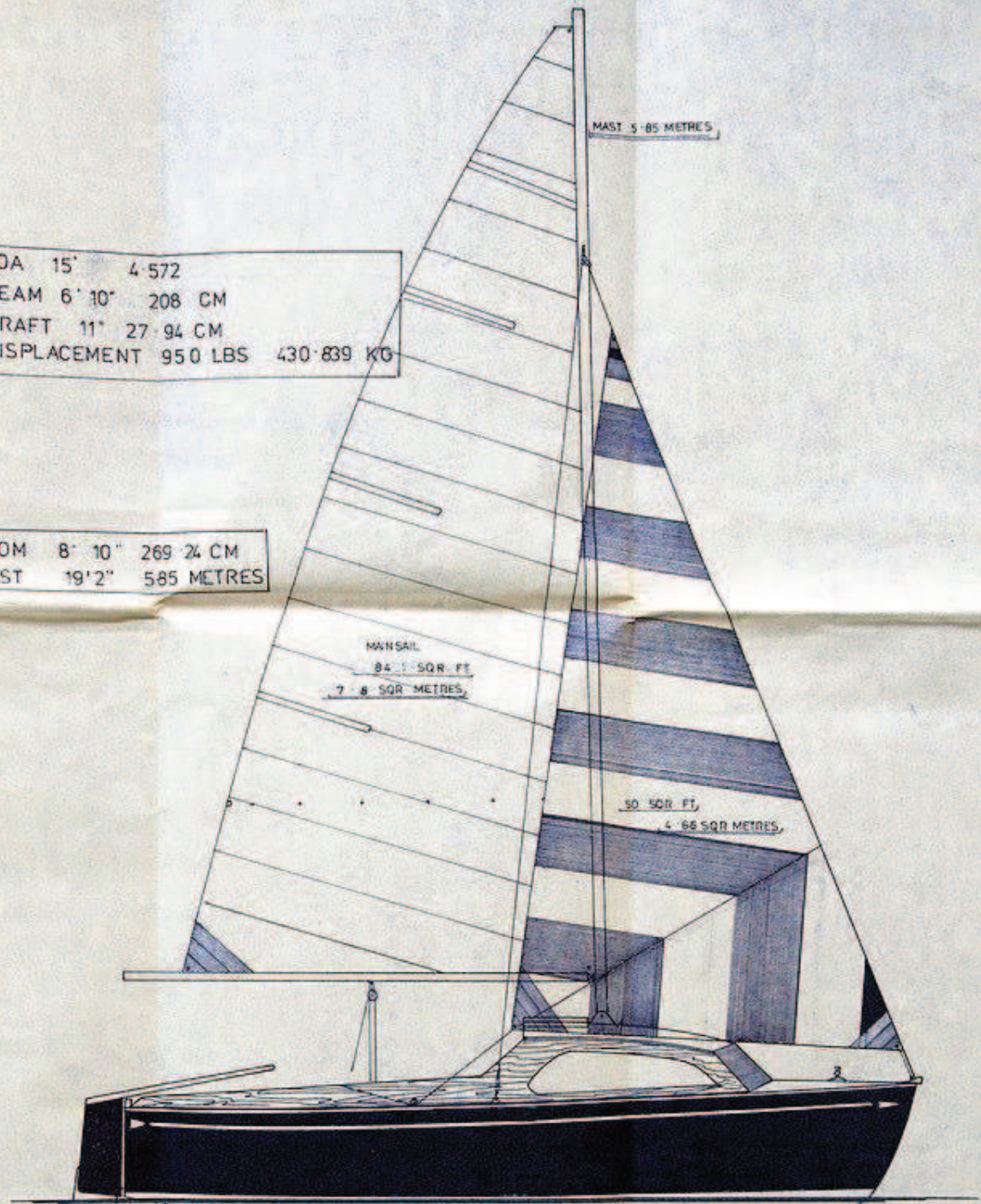


Layout

PELIN PLANS LTD. P.O. BOX 30062 TAKAPUNA, AUCKLAND 9. NEW ZEALAND

LOA 15' 4.572
 BEAM 6' 10" 208 CM
 DRAFT 11' 27.94 CM
 DISPLACEMENT 950 LBS 430.839 KG

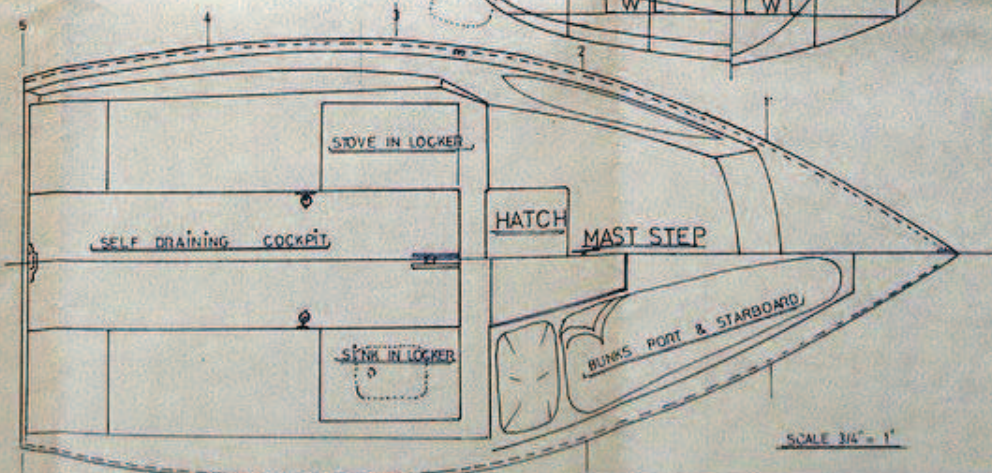
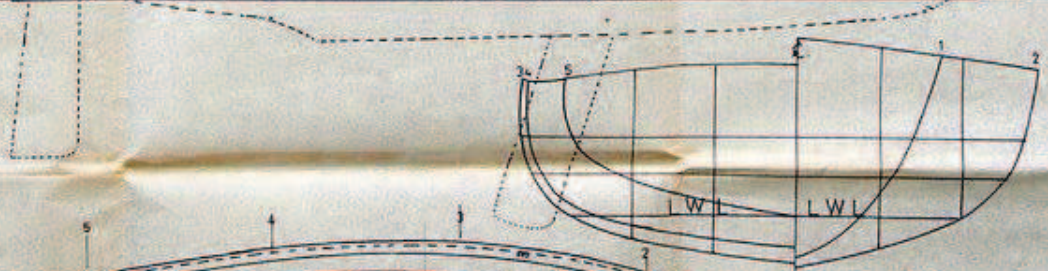
BOOM 8' 10" 269.24 CM
 MAST 19' 2" 5.85 METRES



MAINSAIL
 84.1 SQR. FT.
 7.8 SQR. METRES

50 SQR. FT.
 4.66 SQR. METRES

MAST 5.85 METRES



SCALE 3/4" = 1'